

**Wycombe District Pathfinder Community Engagement Pilot  
Summary of Proposals from Partners' Workshop 20<sup>th</sup> November 2007**

**COMMUNITY LEVEL 1 ARRANGEMENTS**  
*(Community engagement is primarily undertaken at this level)*

**Proposal 1 – Streamlining of Community Engagement Groups**

To combine the Neighbourhood Action Groups (NAGs) with other geographical forums (e.g. Local Grassroots Groups) into one main 'Place-Shaping' Group for that community and reducing the number of meetings required. Community engagement is undertaken in a variety of ways, although for the purposes of the pilot the Community Action Groups will be the only recognised mechanism for discussing place-shaping matters, for that community area. This would be undertaken in all parts of the District during 2008 based on the 16 NAG geographical areas (see attached map), with the fully-fledged model being piloted in two communities (see Proposal 6).

**Proposal 2 – New name for Community Level 1 Meetings**

To rename the Level 1 arrangements as Community Action Groups to reflect their new status as a Pathfinder/multi agency venture.

**Proposal 3 – Level 1 Functions of Community Action Groups**

- To identify community issues and areas of concern/priority for action
- To input into the community planning framework (and the Local Area Agreement) via the Level 2 arrangements into the District Local Strategic Partnership (Wycombe Partnership)
- To continue to encourage self help solutions
- To input into influencing and shaping service provision, including 'participatory budgeting' schemes
- To be involved in patient surveys as part of the GP Quality framework
- To link with other local communities of interest in the area e.g. young people
- To link with formally constituted local groups e.g. residents associations, local voluntary and community groups
- To evaluate its own effectiveness as part of the pilot.

**Proposal 4 – Membership of the Community Action Groups**

Elected representatives (all levels) and Partners as appropriate (primarily front-line staff) meeting with local people and organisations. Action will be taken to ensure that as broad a cross-section of the community as possible is represented on the Community Action Group.

**Proposal 5 – Representation at Level 2 from each Community Action Group**

Two community representatives plus two elected representatives from each Community Action Group would attend the Level 2 meetings and provide the linkages required.

## **Proposal 6 – Pilot Areas in 2008**

To run the fully-fledged pilot in the areas of:

- Stokenchurch/West Wycombe/ Lane End community area (rural focus)
- Downley and Disraeli community area (urban focus)

These communities have been proposed because they have a strong track-record of community engagement, with committed members and Parish council involvement. They have responded positively to the initial approaches regarding NAGs, which have yet to be launched in their areas. It also fits with partners' focus of activities.

### ***PARTNERSHIP LEVEL 2 ARRANGEMENTS*** ***(Partnership working is primarily undertaken at this level)***

## **Proposal 7 – Level 2 Geographical Areas**

To use the existing GC2C areas as the multi agency Level 2 boundaries for the purposes of the Wycombe District pilot (see attached map). Partnership working is undertaken at many levels, although for the purposes of the pilot this will be the only recognised mechanism for discussing place-shaping matters for that area.

## **Proposal 8 – Establishment of all four Level 2 arrangements**

All four level 2 areas to be introduced as part of the Wycombe pilot from April 2008 as a new multi-agency partnership arrangement, under the umbrella of the Wycombe Partnership and the Bucks Strategic Partnership, with strong links to the local delivery of the Local Area Agreement.

## **Proposal 9 – High Wycombe Town Area**

To ask the District Council to consider using the High Wycombe Town Committee as the building block for the High Wycombe Town Geographic Area. It is recognising that boundary and membership issues need to be worked through in detail.

NB: It is not intended to disband the High Wycombe Town Committee but to suggest it meets less often, with the freed up dates being used for the multi-agency meeting. This also preserves the decision-making and special expenses budget responsibilities with the existing High Wycombe Town Committee.

## **Proposal 10 – Level 2 Functions**

Core activities to include:

- Local Area Committee functions including delegated budget spending recommendations;
- Drawing up relevant issues from Level 1 meetings via elected members for discussions with partner agencies, including needs assessments for the area;

- Developing an understanding of local issues through service performance and other area based information and using these to influence future action and provision, including scoping future service requirements;
- To enable partners to engage at a level to meet their capacity requirements;
- Co-ordination of Level 1 activities of Community Action Groups, including creating and holding Local Area/Community Plans to inform the District and County Community Plans and link into the Wycombe Partnership and Bucks Strategic Partnership, with feedback links established; and
- To evaluate its own effectiveness as part of the pilot.

Possible developmental activities as part of the Pilot could be:

- To consider being a resource to draw on from any local scrutiny work being undertaken;
- To consider any relevant Councillor Call for Action issues;
- To advise on:
  - (a) the use of the developer contributions which the District Council receives through the planning system and input into the annual review of the developers guide, subject to District Council approval; and
  - (b) Future use of community assets.

### **Proposal 11 – Wycombe Local Area Committee**

Buckinghamshire County Council to be asked to disband the Wycombe Local Area Committee from April 2008 and devolve the functions between Level 2 and the Wycombe Partnership.

### **Proposal 12 – Name for the Level 2 Arrangements – Local Community Partnerships**

To agree that the Level 2 arrangements be called “Local Community Partnerships” to reflect their new status as a Pathfinder/multi agency venture. This would replace the Local Area Forums that are being rolled out as part of GC2C.

### **Proposal 13 – Membership of the Local Community Partnerships**

That the membership of the Level 2 arrangements comprises two community representatives plus two elected representatives from each Community Action Group, plus Public Sector partner and Voluntary and Community Sector representation. (It is recognised that there will need to be further discussion about membership).

### **Proposal 14 – Implementation of the Pilot**

- Combination of Level 1 groups to be achieved through a three step process involving Elected Representatives and local community discussions.

- Councillor and Partner representatives Reference Group to be established, to include Members from other District areas.
- Joint implementation team, linking together support staff from agencies for more generic working.
- Grassroots Representatives Group, with expanded membership, to act as a sounding board throughout the Pilot.
- External Funding is being pursued to help with the pump-priming costs of establishing a self-sustaining community engagement framework.

### **Proposal 15 – Efficiency Gains**

To achieve targeted efficiency gains through savings efficiencies arising from:

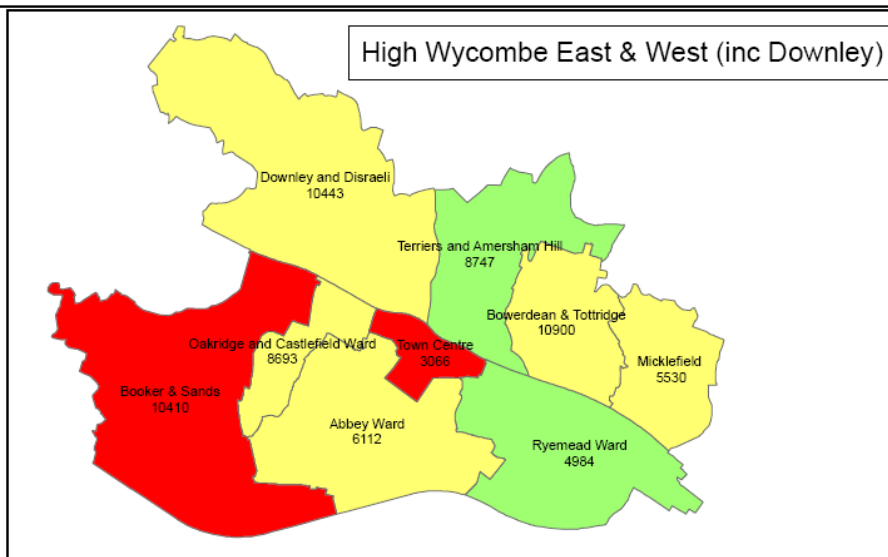
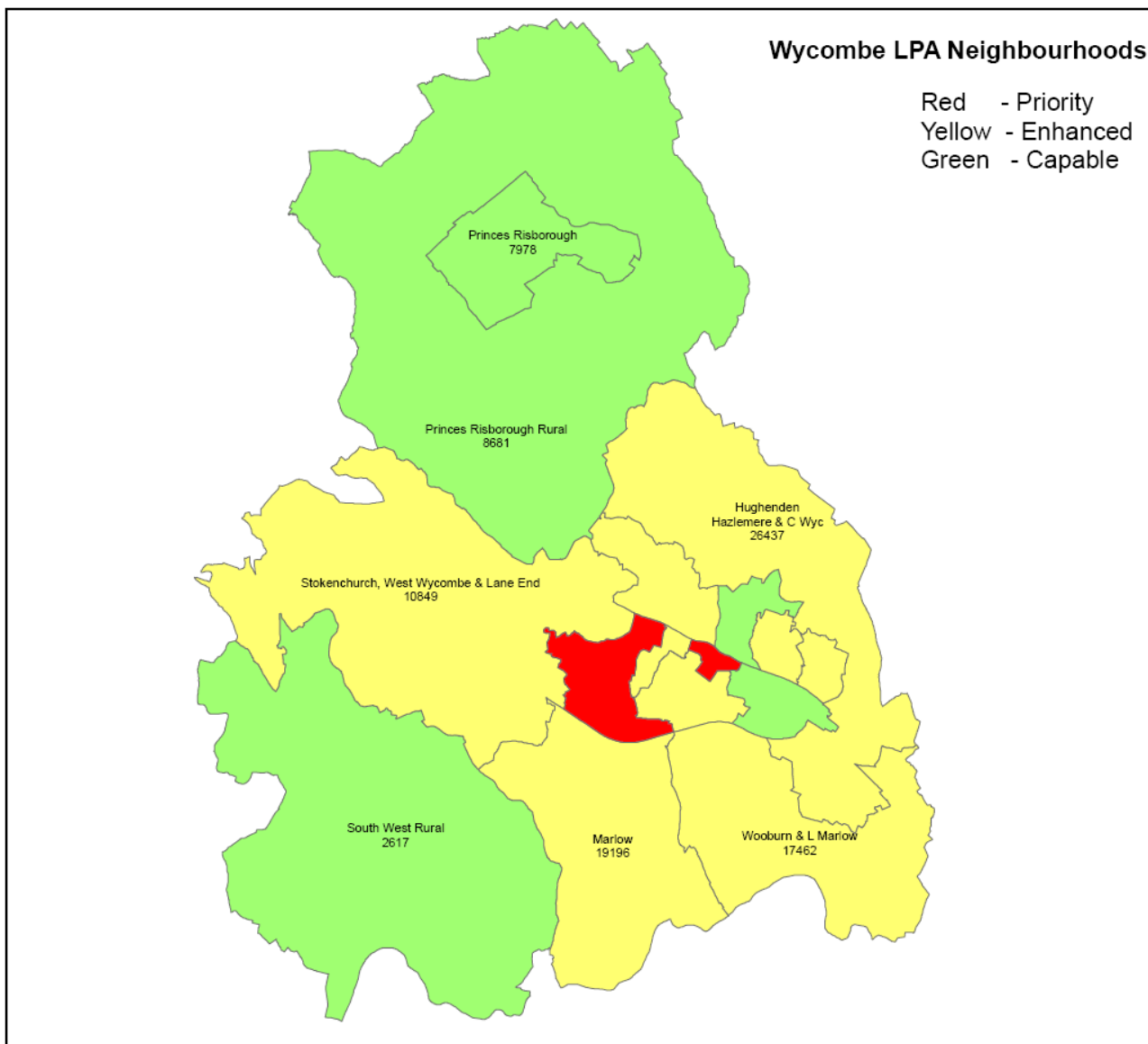
- Disbanding the Local Area Committee
- Using the High Wycombe Town Committee as the basis for the High Wycombe Level 2 structure
- Reducing the number of meetings through combining groups (NAGs, local Grassroots Groups etc)
- Adoption of common and shared processes and support staff arrangements.

### **Proposal 16 – Success Criteria /Evaluation**

Evaluation criteria have been drawn up to measure the success of the Pilot and a formal Peer Review evaluation will also be considered.

### **Proposal 17 – Front Line Professionals**

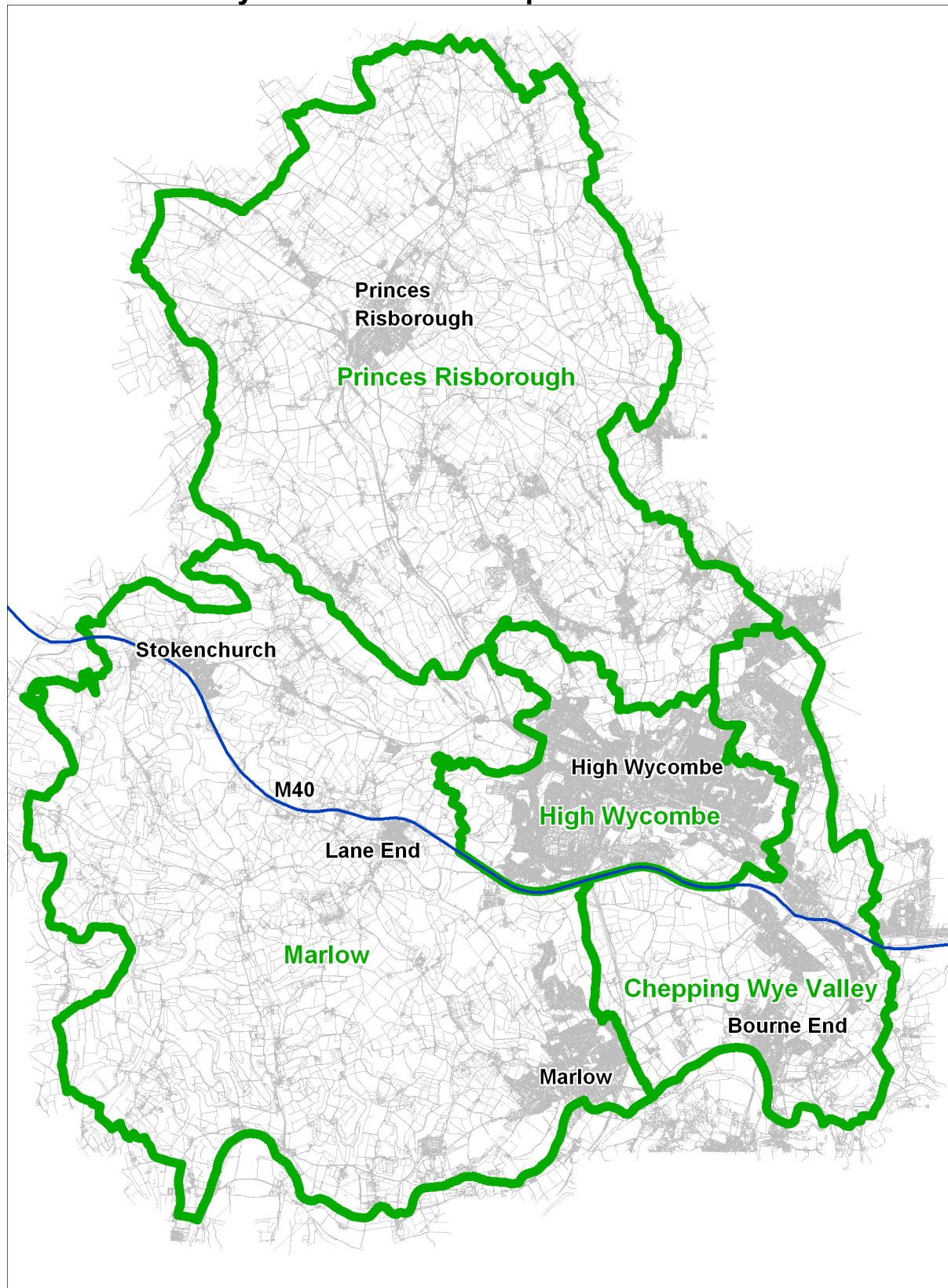
It is recommended that, in order to support the new community engagement partnership framework and to provide a more responsive service for communities, proposals are developed (either within Pathfinder or separately) for linking together of front line professional partners and supporting them to create a virtual network team to foster generic working with greater communication and support.



© Crown Copyright. All rights reserved. Thames Valley Police 100022731 200 6

This map is compiled by Thames Valley Police and has been produced for internal use. Whilst all care is taken in the preparation of this map neither Thames Valley Police nor its officers accept any responsibility for any loss or damage which may result from inaccuracy or omission in the map or from the use of the information contained therein. All rights reserved. No part of this map covered by copyright may be reproduced or copied in any form or by any means whatsoever without the written permission of Thames Valley Police.

## Local Community Areas – District Map



This map is reproduced from Ordnance Survey material with the permission of Ordnance Survey on behalf of the controller of Her Majesty's Stationery Office. © Crown Copyright. Unauthorised reproduction infringes Crown copyright and may lead to prosecution or civil proceedings.

Wycombe District Council. Licence No. LA 086207. 2002